



# LA JOYA

THE JEWEL OF LA MANGA CLUB



LA MANGA CLUB  
sport & leisure





DESTINATION

# WELCOME TO A PRIVILEGED LOCATION

With over 300 days of sunshine a year, Murcia is the perfect place for one of the best tourism and sport resorts in Europe. Discover La Manga Club, on the southeast coast of Spain. Surrounded by a national park, La Manga Club is close to Cartagena, an ancient city of unique cultural and historical interest, as well as the Mediterranean Sea and the Mar Menor.

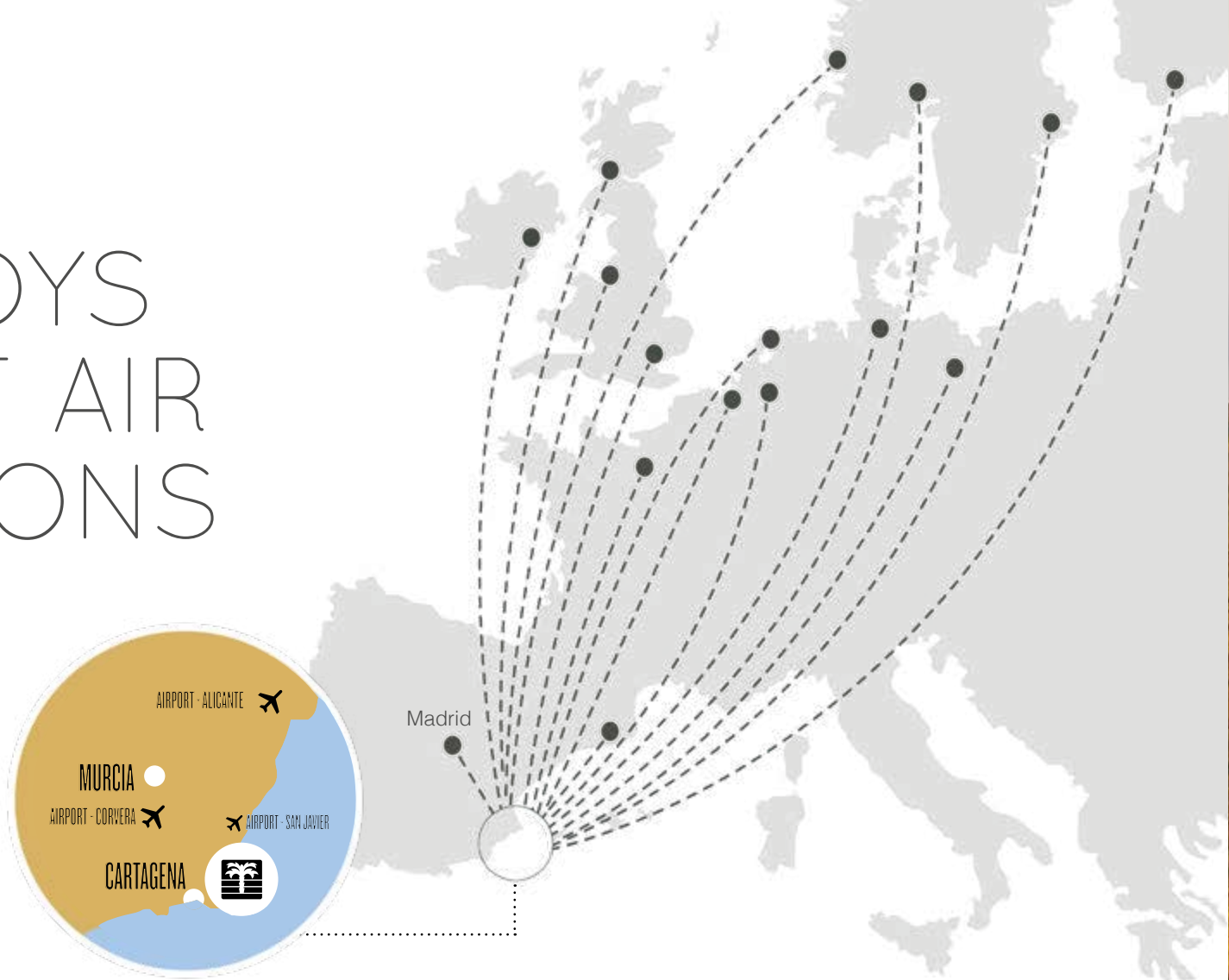
This incredible setting not only means that La Manga Club is within easy reach of a number of beaches, but also blesses the resort with average temperatures of 19°C. The surrounding area is full of attractions, including the Calblanque and Monte de las Cenizas Natural Park, and Cabo de Palos, an internationally recognised marine reserve.





# LA MANGA CLUB ENJOYS EXCELLENT AIR CONNECTIONS

An extensive network of roads connects La Manga Club to other cities in the area and the rest of Spain. In addition, the local airports of San Javier (only 30 km away and offering 70% of the flights to the UK and Ireland) and Alicante (less than 100 km away and offering regular flights to the rest of Europe and some international destinations) make it easy to arrive and depart from Spain.



Amsterdam 2h 40	Barcelona 1h 10	Bergen 3h 30	Berlin 2h 55
Brussels 2h 40	Dublin 2h 50	Eindhoven 2h 50	Glasgow 3h
Hamburg 2h 55	Helsinki 4h 10	London 2h 35	Madrid 1h 05
Manchester 2h 45	Oslo 2h 55	Paris 2h 15	Stockholm 3h 50





# RESORT



**Today's  
Golfer**  
TRAVEL  
AWARDS

Best Spanish Golf Resort  
Today's Golfer Awards

2012, 2013, 2014, 2015



Winner Best Spanish Golf  
Hotel World Golf Awards

2014, 2015



Europe's Leading  
Luxury Resort & Villas

Winner for Europe's Leading  
Luxury Resort & Villas

2017, 2018





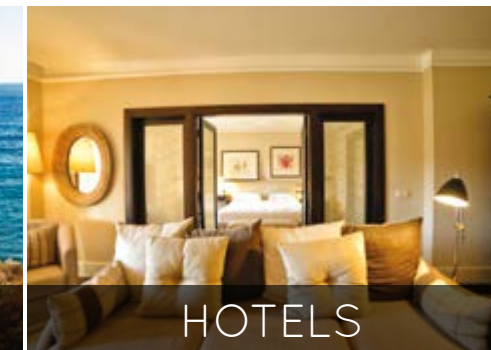
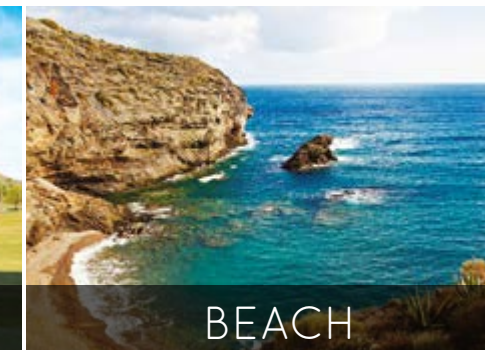
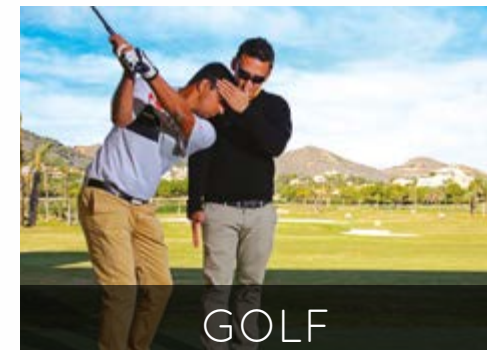
# LA MANGA CLUB RESORT

**La Manga Club is an exclusive vacation, sport and leisure resort located in a privileged setting bordered by natural parks and unspoilt beaches. It offers luxury, leisure and sport, with wonderful weather all year round.**

Covering an area of 1,400 acres (560 Ha.), the resort offers exclusive accommodations, private access to beach, first-class professional sport facilities and fine dining. It's the ideal place for those seeking exceptional tranquillity, security and privacy coupled with superlative service.

Ever since it opened in 1972, La Manga Club has attracted holidaymakers and sport teams with its outstanding facilities, all designed to the highest international standards. These include the Príncipe Felipe, a five-star hotel, Las Lomas, a four-star aparthotel, three golf courses, a 28-court tennis centre, eight FIFA-standard football pitches and a 2000m<sup>2</sup> Spa and Fitness Centre. Together, they have earned us a reputation as Europe's best sport and leisure resort, and we've received numerous international awards and accolades.

## NEVERENDING SPORTS & LEISURE







# IDEALLY LOCATED AT THE HEART OF LA MANGA CLUB WITH STUNNING SEA VIEWS

La Joya is composed of two plots (2.006 m<sup>2</sup> and 2.072 m<sup>2</sup>) which can be sold together with one villa or separate with two villas.



# 2 PLOTS MANY OPTIONS

**LA JOYA FULL PLOT**  
Spectacular plot with customized villa  
(alternatively without villa)  
4.223,5 m<sup>2</sup> plot area, 676,2 m<sup>2</sup> built area.

**LA JOYA EAST PLOT**  
Stunning plot with customized villa  
(alternatively without villa)  
2.006 m<sup>2</sup> plot area, 321,4 m<sup>2</sup> built area.

**LA JOYA WEST PLOT**  
Stunning plot with customized villa  
(alternatively without villa)  
2.217,5 m<sup>2</sup> plot area, 354,8 m<sup>2</sup> built area.





# STUNNING SEA VIEWS

The La Joya plots offer stunning views towards the sea and Mar Menor de La Manga. The mountains to the east form a natural background.

La Joya offers the opportunity to combine these spectacular views and closeness to nature with quality architecture, modern design, and every form of comfort imaginable.

LA JOYA



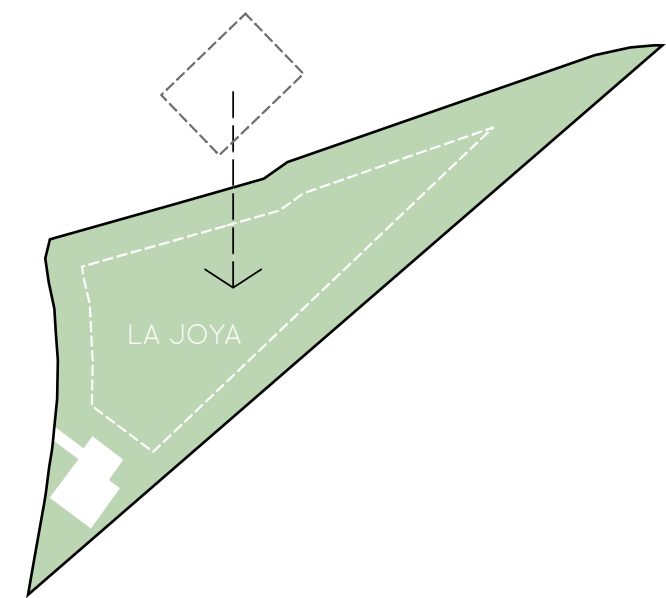


# LA JOYA OPTIONS

Option 1: Full Plot + Villa  
Option 2: Full Plot

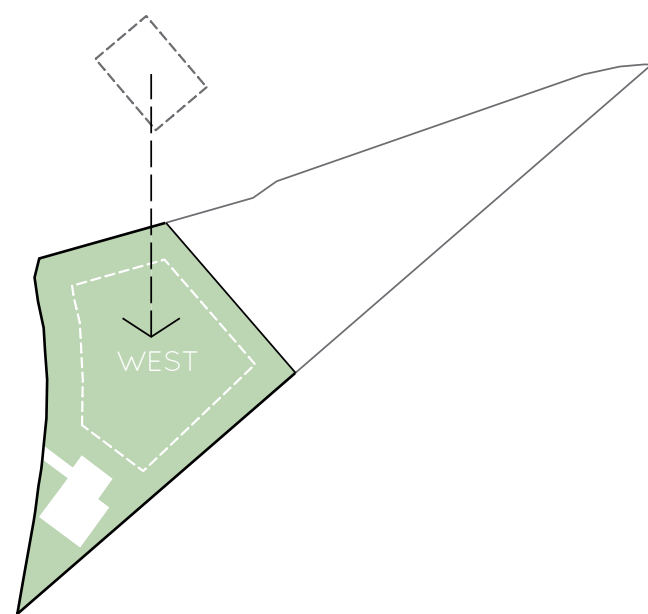
Option 3: One Plot + Villa  
Option 4: One Plot

## FULL PLOT

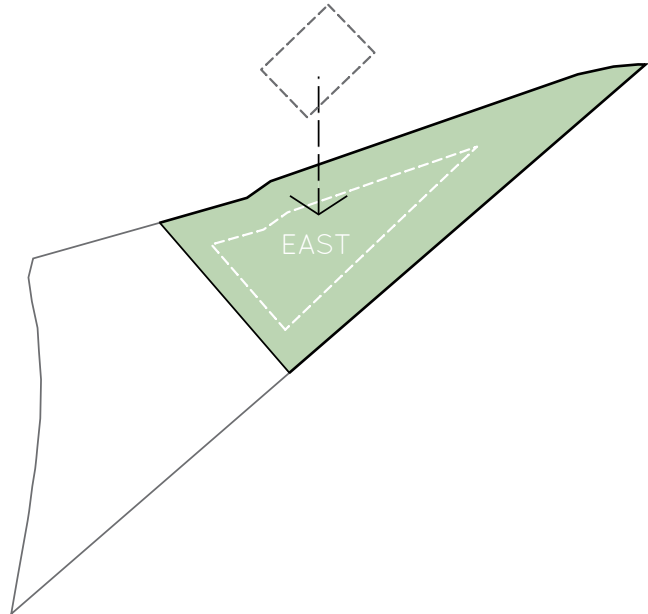


LA JOYA  
4.223,5 m<sup>2</sup> plot area  
676,2 m<sup>2</sup> built area

## ONE PLOT



LA JOYA WEST  
2.217,5 m<sup>2</sup> plot area  
354,8 m<sup>2</sup> built area



LA JOYA EAST  
2.006 m<sup>2</sup> plot area  
321,4 m<sup>2</sup> built area